

GE Healthcare



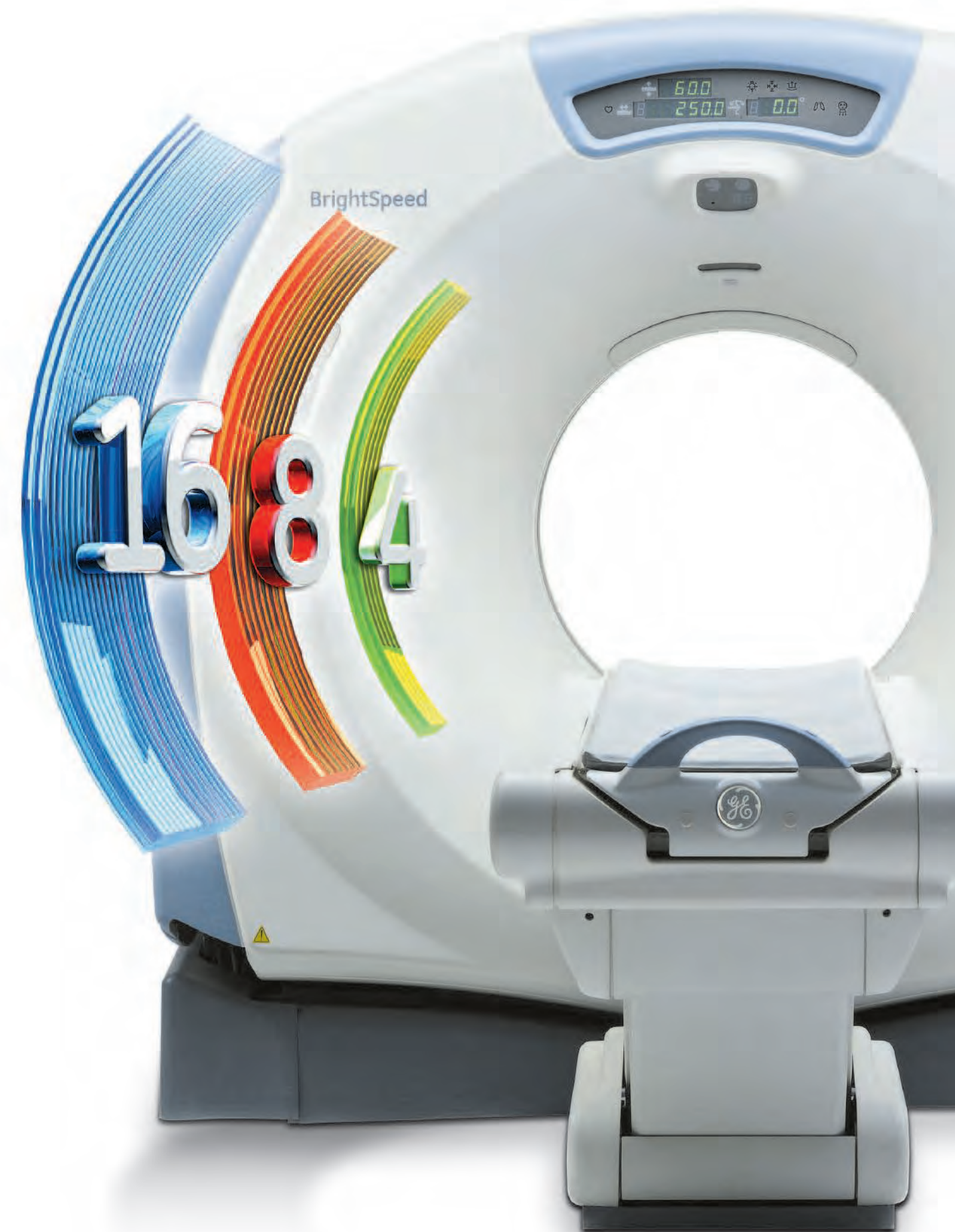
# Great treasures in even smaller places

BrightSpeed Series



GE Healthcare's BrightSpeed Series 4, 8 & 16 brings you multi-detector CT capabilities with maximum convenience in an ultra-compact design. Built with LightSpeed VCT inside and compact footprint on the outside, the BrightSpeed Series provides high quality images across a wide range of clinical applications in a setting that takes your site space limitations into consideration. And by adding the Freedom Workspace to the BrightSpeed Series, you will have clear patient visibility and improved ergonomics for radiographers. Copable, compact, convenient, the BrightSpeed™ Series delivers everything you're looking for in a multi-detector CT scanner.

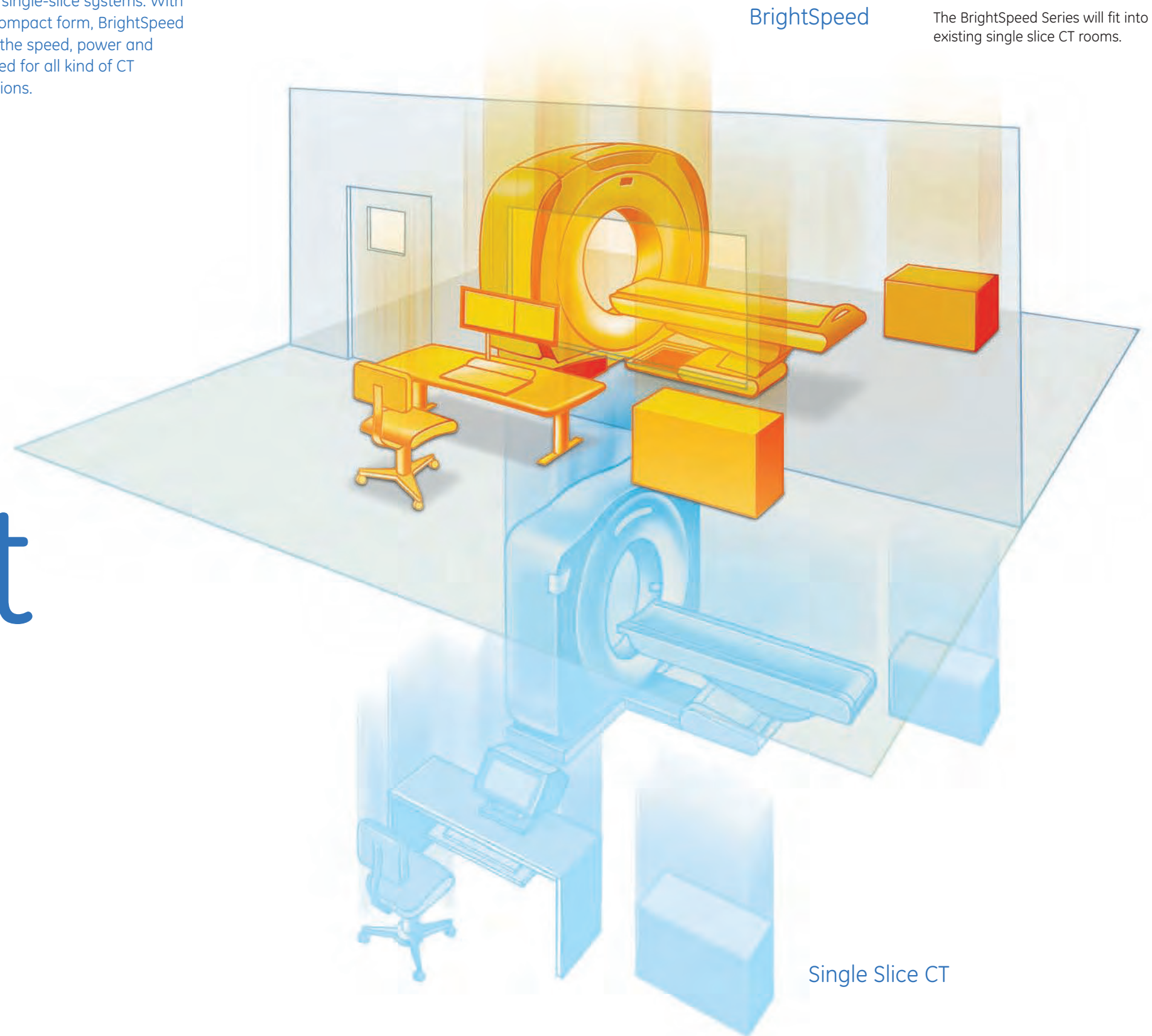
# BrightSpeed Series



Requiring a minimum room size of just 3.3 m X 5.3 m, down to 17.5 m<sup>2</sup>, BrightSpeed Series' smaller system footprint fits easily just about anywhere – even in the same space as many single-slice systems.

With the proven benefits of LightSpeed VCT technology inside- and a smallest footprint on the outside in the market- the BrightSpeed Series benefits both practitioners and patients. Requiring a minimum room size of just 3.3 m X 5.3 m, down to 17.5 m<sup>2</sup>, BrightSpeed Series' smaller system footprint fits easily just about anywhere – even in the same space as many single-slice systems. With this new ultra compact form, BrightSpeed Series optimize the speed, power and resolution needed for all kind of CT routine applications.

# Ultra compact size...



GE R&D teams introduced with the LightSpeed VCT major breakthroughs such as the Volara Data Acquisition System and the Xstream FX workflow engine. The BrightSpeed Series is built with these innovations and more, securing you a reliable system with high image quality and effective productivity in a small compact design. Ready to expand your CT capabilities. We have just the Bright answer.



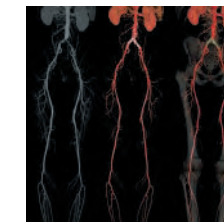
# Breakthrough Technology inside...

## Capable to See More...

GE's exclusive Volara™ 24-bit Digital Data Acquisition System (DAS) delivers high processing power for high-resolution images and low-dose performance. It reduces noise up to 33%, resulting in unprecedented image quality even in difficult areas such as shoulders, hips and large patients. Likewise, in low-contrast, soft-tissue studies (body, neuro), as well as in pediatric exams.

## Capable to perform better...

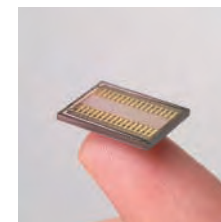
The Solarix™ tube in the BrightSpeed Series provides up to 280 mAs (350 mA at 0.8 sec rotation), that is plenty of power to produce exceptionally high quality diagnostic images combined with the Volara DAS. And the Solarix tubes's low cost will improve the overall life cycle costs. The result: Versatile, reliable, cost-efficient imaging.



## Capable to cover more...

The new BrightSpeed Series offers enough power even for the most demanding applications like the peripheral run off in Angio CT. It allows for 1400 mm of scannable range while maintaining outstanding image quality.

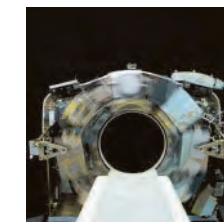
# Capable



Volara™ DAS



Solarix™ Tube



0.8 second per rotation

## Capable to Produce Faster...

Xstream FX Workflow and productivity engine accelerates your image process with a transfer speed up to 16fps real time during acquisition, and provides a reconstruction speed of up to 6fps\*. This balanced system design eliminate your bottlenecks – instead of pushing them elsewhere...

\* Optional

A single, simple and powerful operator console having the same ease, familiar interface as on our LightSpeed systems, puts automated processing features at your fingertips while eliminating the complexity of a second console. The optional Freedom Workspace ensures smoother exams and higher technologist productivity.

BrightSpeed Series systems feature the same user interface that's on over 5,000 installed LightSpeed systems -and that thousands of technologists know well.

Ready to Experience the ease of use...

# Convenient

Exceptional ease of use...

## An inspired cockpit

The new Freedom Workspace\* is a space unlike any other. Sit/stand flexibility will provide you the highest level of comfort. Remote location of the operator console hardware can decrease noise and heat to further enhance your working environment. Designed to reduce stress and fatigue, you will simply be able to do more.



\* Optional

A single, simple and powerful operator console having the same ease, familiar interface as on our LightSpeed systems, puts automated processing features at your fingertips while eliminating the complexity of a second console. The optional Freedom Workspace ensures smoother exams and higher technologist productivity.

BrightSpeed Series systems feature the same user interface that's on over 5,000 installed LightSpeed systems –and that thousands of technologists know well.

Ready to Experience the ease of use...

# Convenient

Exceptional ease of use...

## ... Patient comfort



## The Patient Connection

There is no patient taking a CT examination without anxiety. There is always stress associated to the procedure. The new gantry and Workspace design will contribute greatly to reassure the patient. Sit/Stand flexibility as well as the horizontal and vertical monitor flexibility will allow operators to have a clear path of visibility to the patient without diminishing the workflow productivity. Technicians can always maintain eye contact and coach the patients to held their breath. Exclusive breathing lights and Digital-countdown timers built into BrightSpeed scanners help coach patients through breath-holds to remain motionless during scans. AutoVoice tells patients when to hold their breath and when to breathe again in any language.

## Increased Workflow...

## Convenient... Xstream FX workflow and productivity engine

### A simple acquisition

A simple user interface minimizes training and maximizes technologist utilization and productivity.

### Put it in Perspective

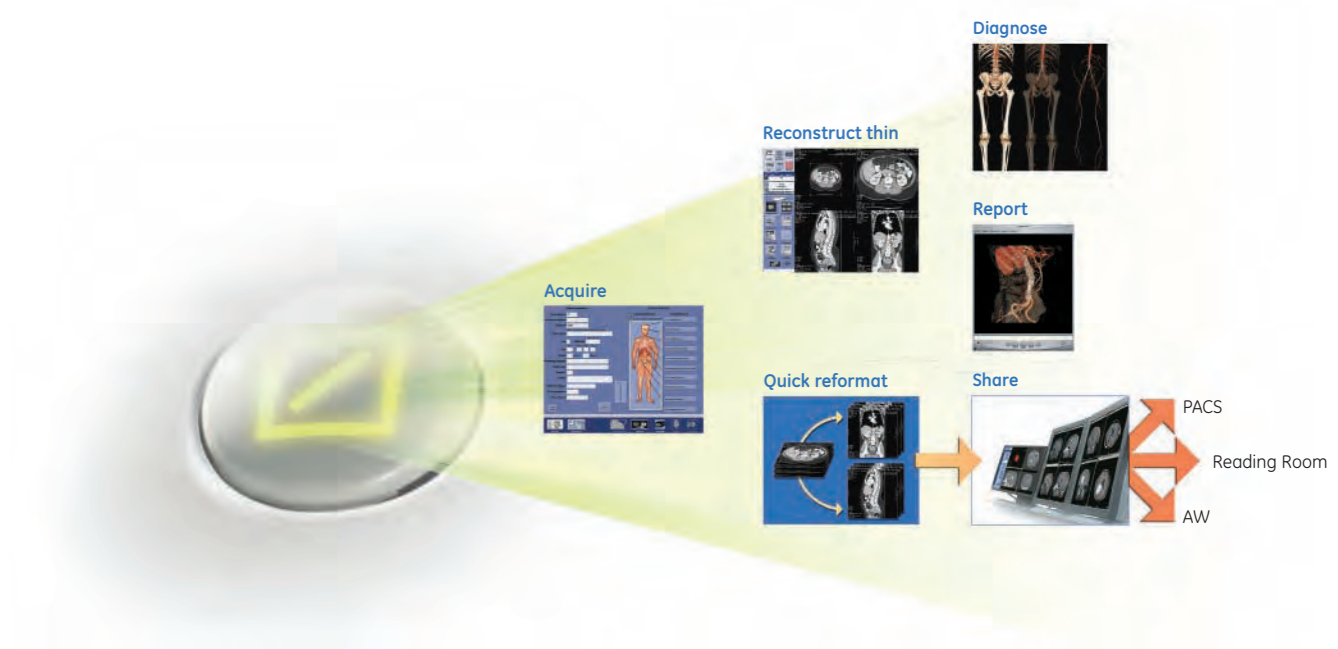
With Direct-Multi-Planar Reconstruction (DMPR), datasets are prospectively presented in the axial, sagittal, coronal and oblique planes. Reformatted images can be prescribed in the scan protocol for automatic generation, distribution and storage.

### Make Volume Review Routine

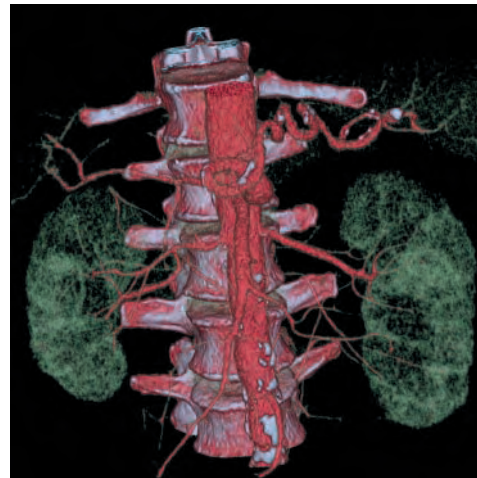
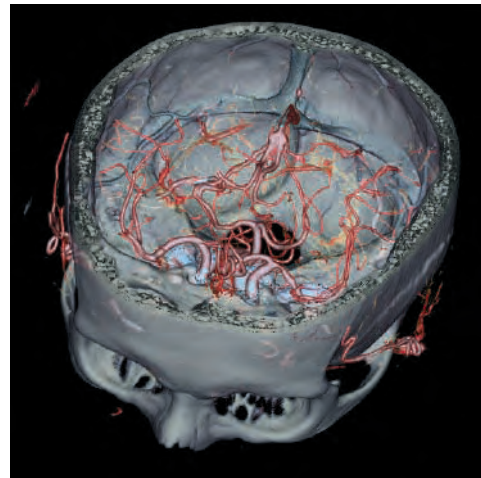
GE's most advanced volume review applications are now available on the BrightSpeed operator console. Our One-Touch protocols personalize image presentations to individual physician preferences, so volume-rendering attributes, multi-planar reformats and image sizing are automatically applied as the patient series open. With autosegmentation tools, a touch of a button removes unwanted bone or surrounding structures, providing clear visualization of vascular structures for faster interrogation.

### Big Enough to Share

Prospective Auto-Transfer allows you to prescribe what you want where you want it on the network at the image, series or exam level or distribute it on CD, DVD in PC or DICOM format.

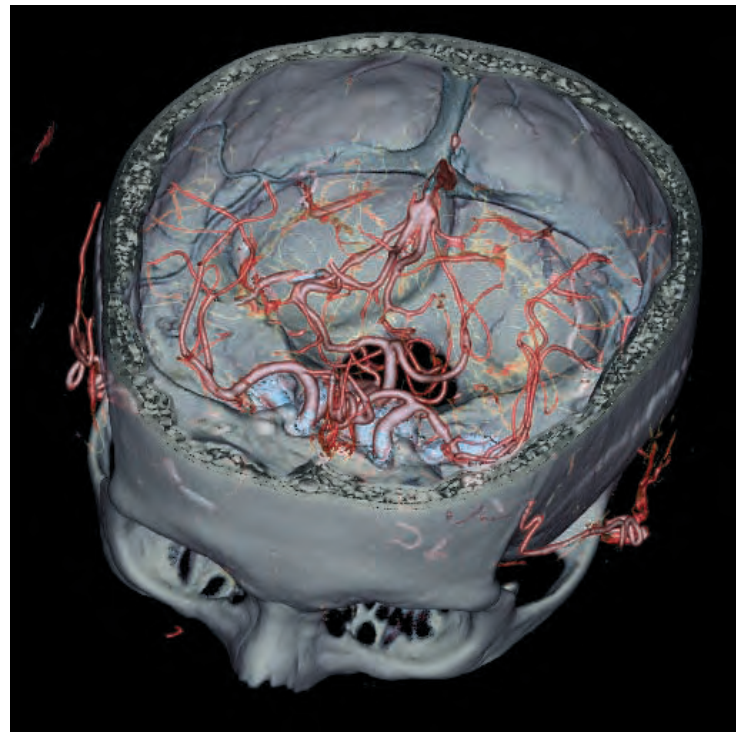


The true proof of BrightSpeed Series?  
See for yourself. It delivers full multi-detector  
clinical capabilities across a full range of exams.  
So you can perform new clinical applications  
simply not possible with your single or  
dual-detector system and stay at the forefront  
of multi-slice technology.

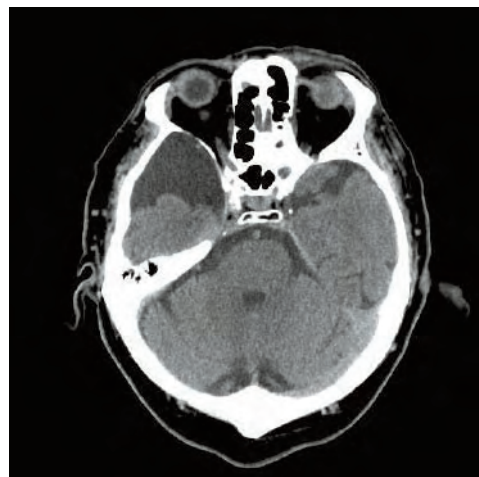
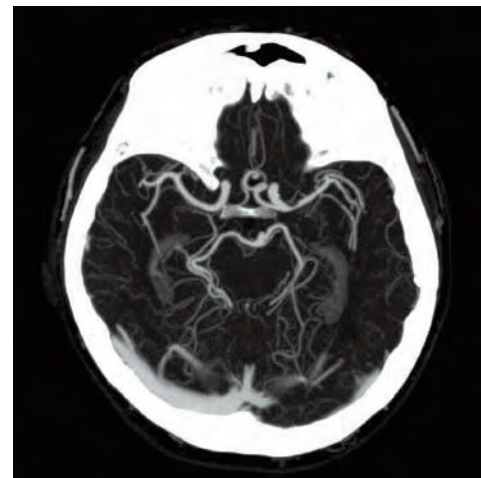


# Clinical results

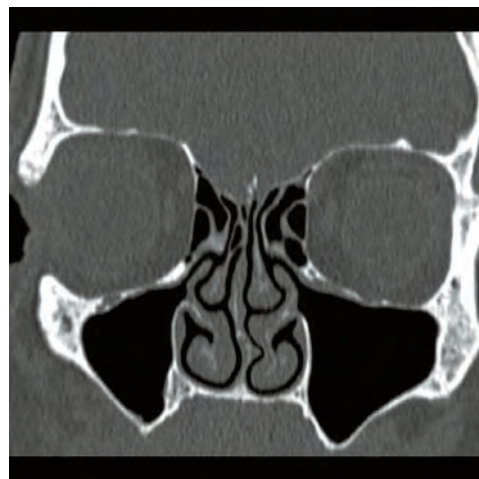
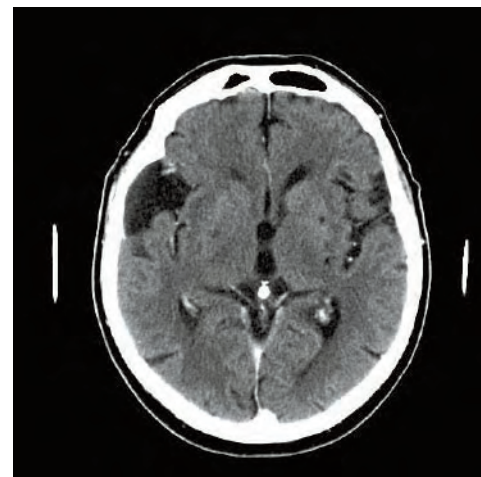




CT Angio: detailed cerebral vessels analysis



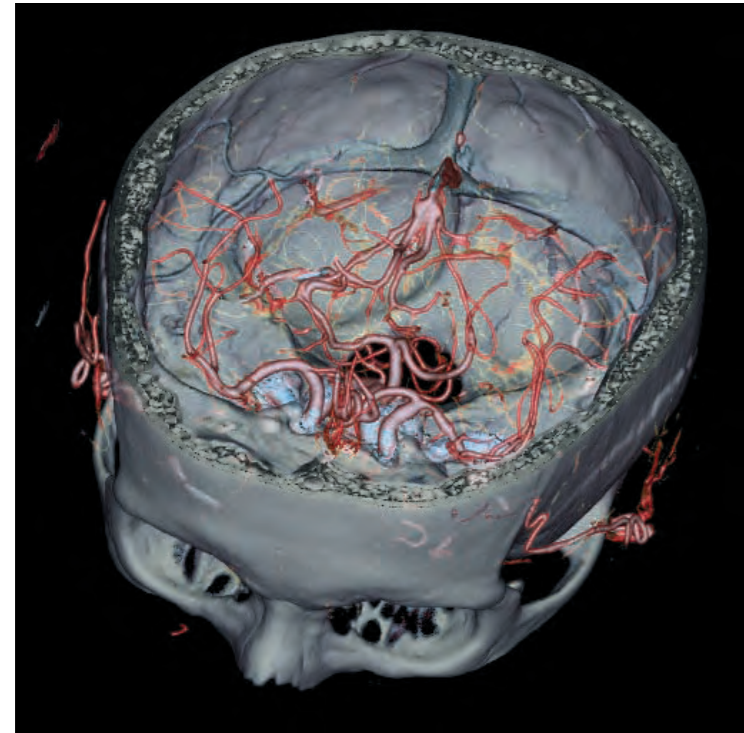
Routine brain: cerebellum & cerebrum study



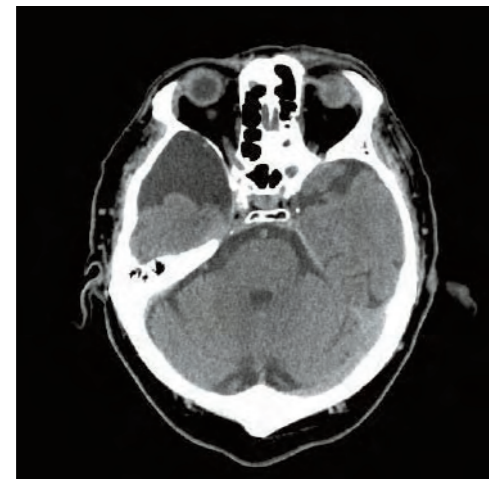
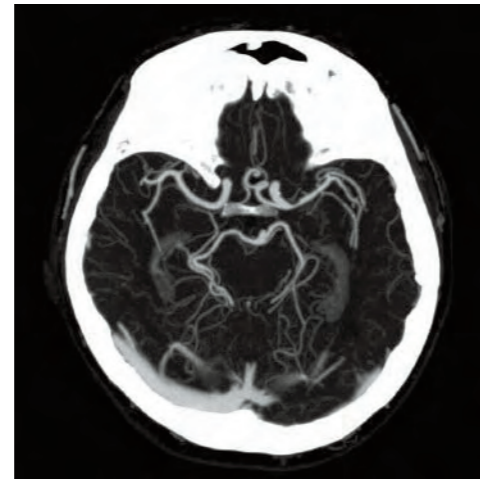
Sinus: low dose study

Let you see inside...

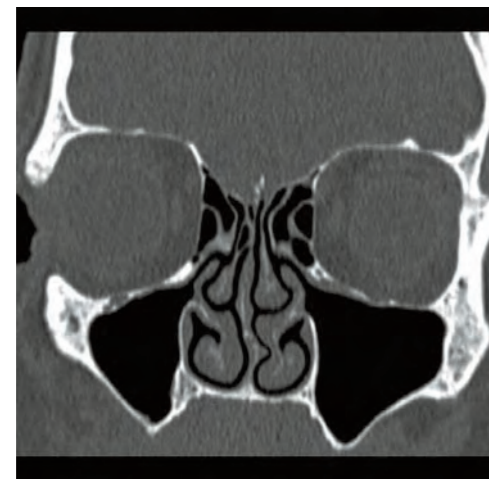
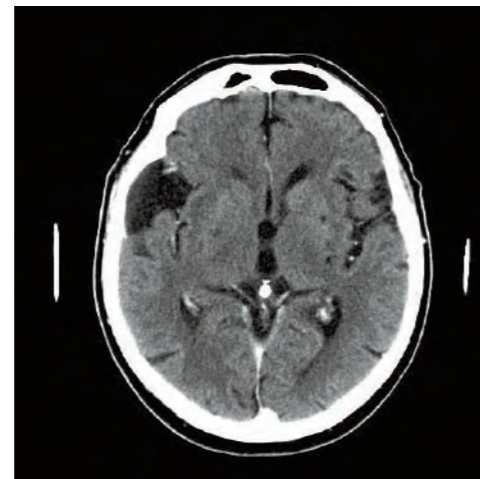




CT Angio: detailed cerebral vessels analysis



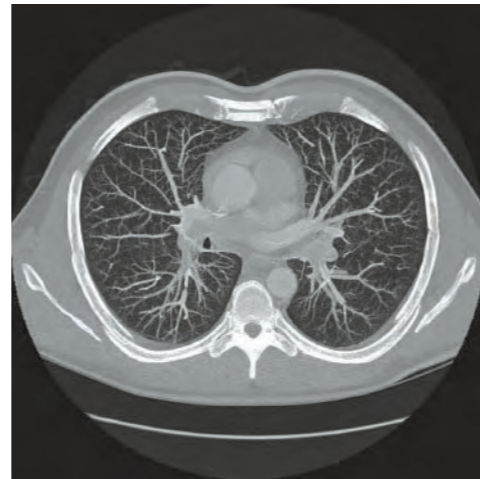
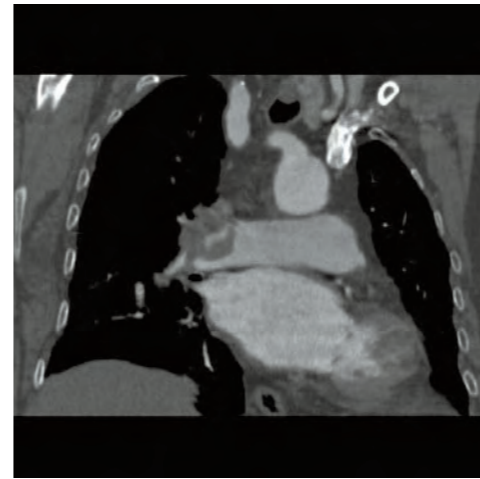
Routine brain: cerebellum & cerebrum study



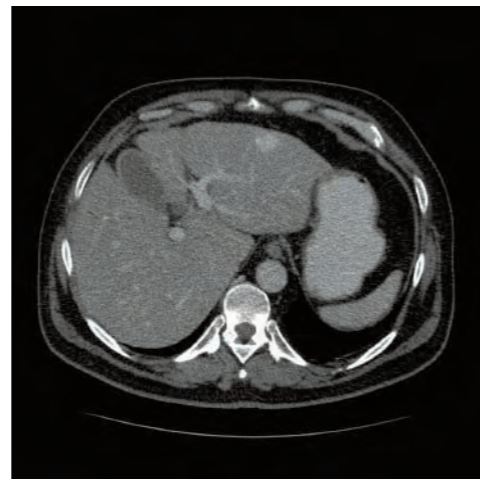
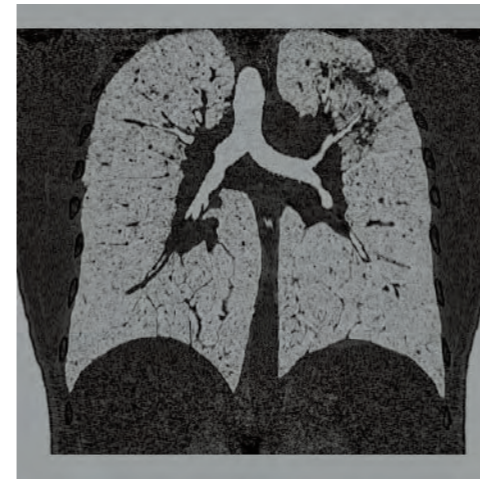
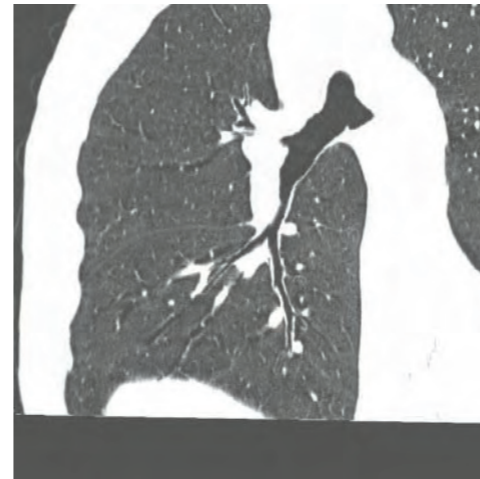
Sinus: low dose study



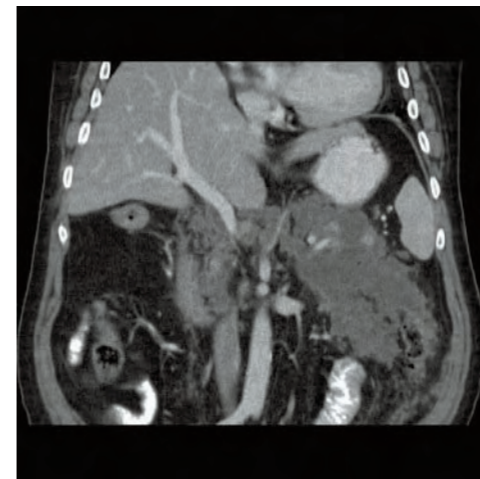
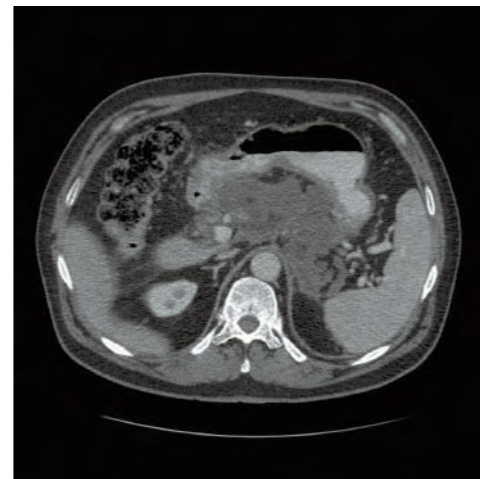
Pulmonary embolism: axial & MPR images



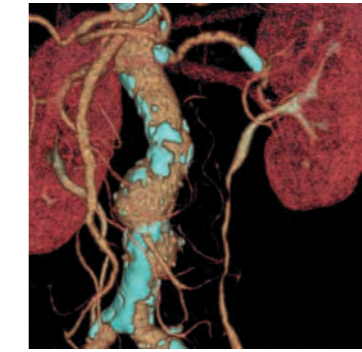
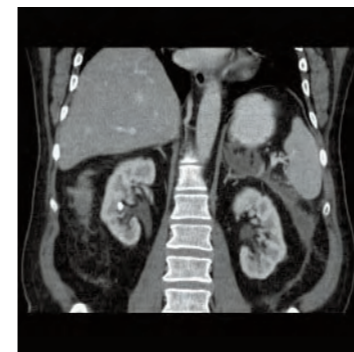
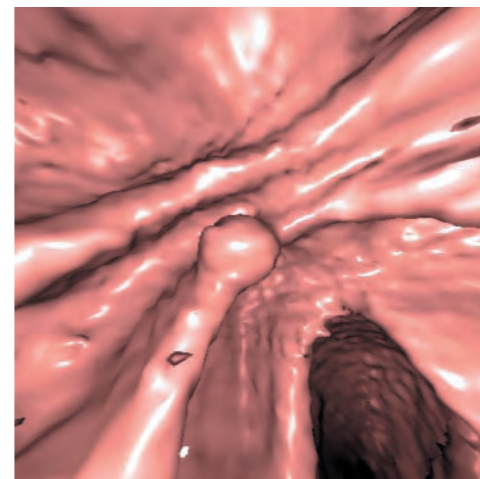
Hi-Resolution Lungs: isotropic imaging for vascular, airways and bronchi evaluation



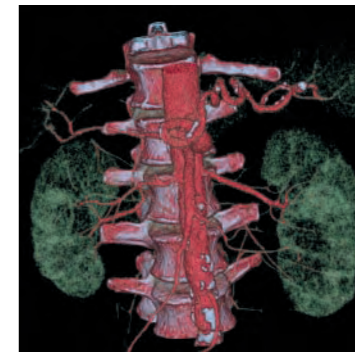
Abdomen: portal phase acquisition and multi planar imaging ; pancreatic disease



Colorectal disease study ; polyp detection



CT Angio ; detailed renal arteries assessment

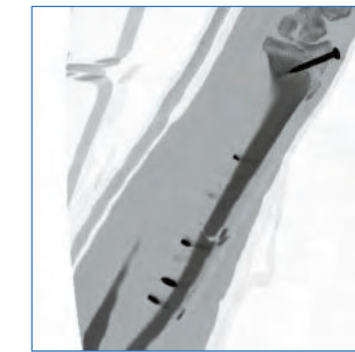
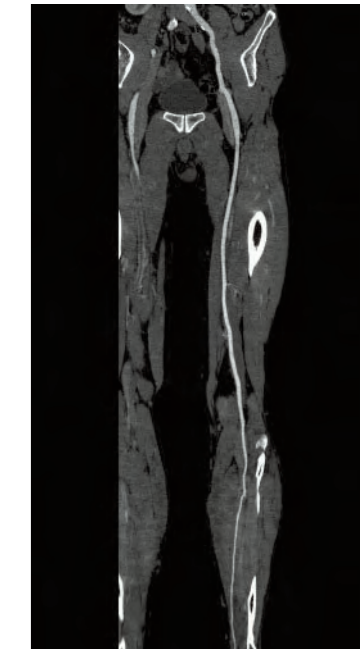


Lumbar vertebrae & sacrum study

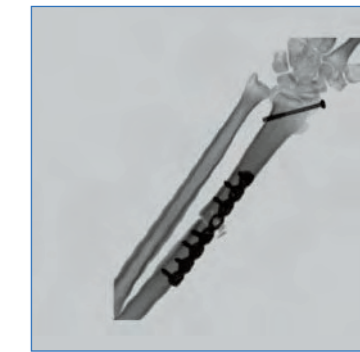


Isotropic acquisition for calcaneum fracture evaluation

CT Angio ;  
homogenous arterial  
enhancement for  
peripheral study,  
Volume Rendered,  
curved,  
cross-sectional  
images



Post surgery follow up ; radius fracture



By choosing GE Healthcare, you have opted for the quality which has made our brand the market leader for many years.

To ensure that you continue to benefit from the portfolio of skills offered by GE Healthcare in the maintenance, monitoring and repair of your systems, we now offer three Service Environments which correspond to your requirements no matter how your equipment is utilised.



# Peace of Mind

## Beyond maintenance Together

### A broad service experience supported by expert people and high-tech infrastructure

#### Proven experience

With more than 6000 LightSpeed CT's globally... At least 30 million patients per year across the world get a CT exam on a GE Healthcare LightSpeed system. All the experience gained from understanding the needs of these customers and their patients helped us to improve the BrightSpeed service solution performance.  
> Take benefit from the biggest CT service provider

#### A world class team

Wherever you are located, a GE Healthcare Engineer is next to you. Our Field Engineering team is permanently connected to our Services network via their PDA. By using this tool they may for example check remote diagnostic outcomes, manage spare parts delivery or update the service records.  
> Always an expert at your side

#### A worldwide knowledge database

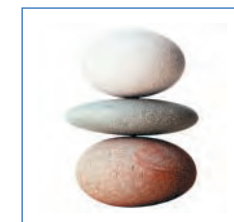
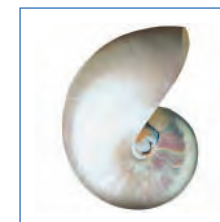
Our growing database of BrightSpeed Engineering and Service knowledge is maintained in a central location to make sure that we are getting smarter each day about how to keep the BrightSpeed Series up and running.  
> Gain the benefit of GE expertise, no matter where you are.

#### Regional remote service answers

GE Healthcare has implemented regional infrastructure solutions, which are providing you with the appropriate support. When service is needed, you are in touch with your regular Services organization, they know you and the way you work.  
> Get connected to people who know you

#### Services technology

BrightSpeed is connected to the GE Healthcare service network. Supported by a broadband connection a set of tools like iLinq or iCenter provide solutions to help you in your daily operations.  
> The right tools to make the right decision



Data subject to change.  
Marketing Communications GE Medical Systems  
Société en Commandite Simple au capital de 52.854.900 Euros  
RCS Versailles B 315 013 359  
A General Electric Company,  
doing business as GE Healthcare

France  
Paris  
Fax: +33 (0) 1 30 70 98 55

Japan  
Tokyo  
Fax: + 81-3-3223-8524

Singapore  
Fax: + 65-291-7006

USA  
Milwaukee  
Fax: + 1-262-521-6123

## Healthcare Re-imagined

GE is dedicated to helping you transform healthcare delivery by driving critical breakthroughs in biology and technology. Our expertise in medical imaging and information technologies, medical diagnostics, patient monitoring systems, drug discovery, and biopharmaceutical manufacturing technologies is enabling healthcare professionals around the world to discover new ways to predict, diagnose and treat disease earlier. We call this model of care "Early Health."

The goal: to help clinicians detect disease earlier, access more information and intervene earlier with more targeted treatments, so they can help their patients live their lives to the fullest.

Re-think, Re-discover, Re-invent, Re-imagine.

GE Healthcare  
Chalfont St.Giles,  
Buckinghamshire,  
UK

[www.gehealthcare.com](http://www.gehealthcare.com)



GE imagination at work