

# It's all about you

Mobile C-arm systems BV Endura

**PHILIPS**

# It's about seeing the difference...

Experience a whole new way of working with the Philips BV Endura. Compact and flexible, this surgical imaging system is versatile to use, easy to move and can handle a full range of demanding procedures. Designed to optimize your workflow, this versatile workhorse is complemented by a state-of-the-art workstation.

To provide you with an intelligent viewing concept, the BV Endura has an advanced MobileView Station. Created to fit perfectly in the surgical workflow, you can easily maneuver this ultra compact MobileView Station within the tight confines of the OR.

And to assure you of excellent quality images time after time, the BV Endura incorporates a unique concept – SmartVision.

The BV Endura comes with a 9" or 12" image intensifier and goes anywhere you need it – surgery, intensive care and emergency. It can handle a full range of applications:

- Vascular procedures
- Orthopedic surgery
- Abdominal surgery
- Neurosurgical procedures
- Thoracic surgery



# and experiencing it.

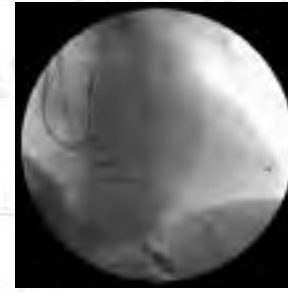
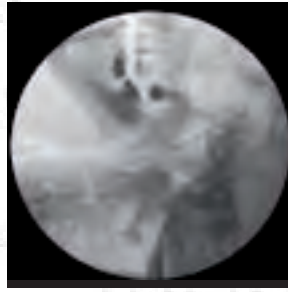
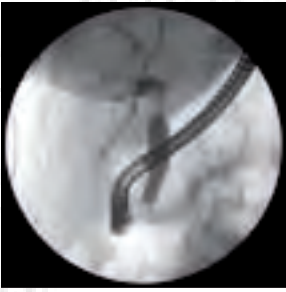
## **SmartVision - high quality images at a low dose**

Philips knows how important it is for you to have high quality images. That's why we have developed the next generation in C-arm imaging: SmartVision. A unique concept, SmartVision offers you a combination of advanced technologies across the imaging chain that result in the high quality images at a low dose. Some highlights include:

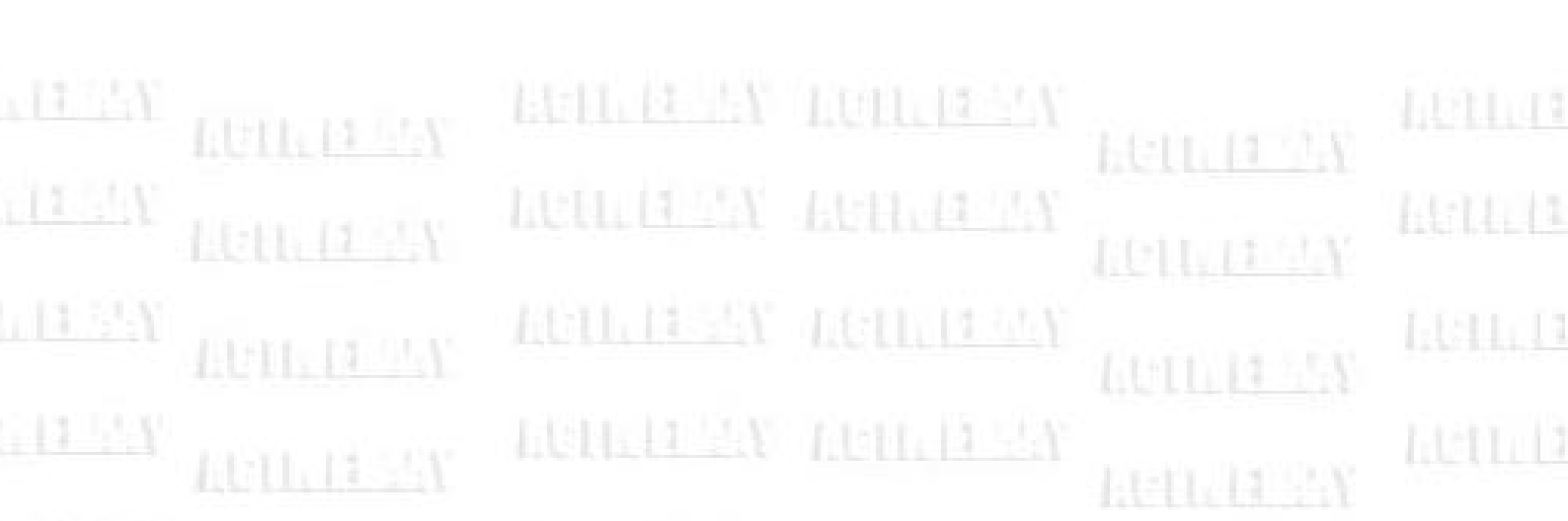
- **1K<sup>2</sup> imaging:** The full digital imaging chain includes powerful image processing functions like advanced noise reduction and 2D edge enhancement, providing you with high quality images time after time.
- **BodySmart:** Unique BodySmart software gives you superb image contrast, time after time. It finds, tracks and precisely defines the field of view to anatomy – no matter where it is on the image intensifier.
- **Automatic Shutter Positioning:** With the unique Automatic Shutter Positioning feature, you can have optimal shutter positioning for the best image quality possible. With just one push of a button, the shutters are automatically positioned with respect to the anatomy of interest.
- **Automatic contrast/brightness:** Automatic contrast/brightness lets you optimize real-time contrast and brightness at the touch of a button.

SmartVision ensures that you get the best image, the first time, at a low dose.





DoseWise: With every new system, Philips looks at how we can incorporate better shielding and improve X-ray exposure to further reduce dose. The Philips unique beam filters for example is a feature that reduces dose by 40% over conventional filters. And with the pulsed fluoro modes, dose can be reduced by up to 75%.



# It's about reducing size...



Revolutionize the way you work with BV Endura. Optimally designed, the MobileView Station not only looks better, it performs better. Thanks to its compact size, this system can be easily moved around even in the tight confines of the OR. And its small footprint ensures that it can be brought as close to the operating table as is desired. Its unique design also enables easy cleaning of the equipment.

With the BV Endura and the intelligent viewing concept, the operator can enter patient demographics manually or retrieve a worklist via the hospital network. All this while the MobileView Station is already positioned at the surgical table. At the start of the procedure, the operator simply needs to turn the monitor towards the physician. Later, the monitors can be turned back to the operator to process the images and send them to PACS. To ensure high quality on-screen images, the MobileView Station is equipped with 18" LCD monitors. And to provide maximum flexibility, the height of the monitors can be adjusted to the surgeon's convenience – whether sitting or standing.

Height movement of the foldable monitors for optimal working and transport height.

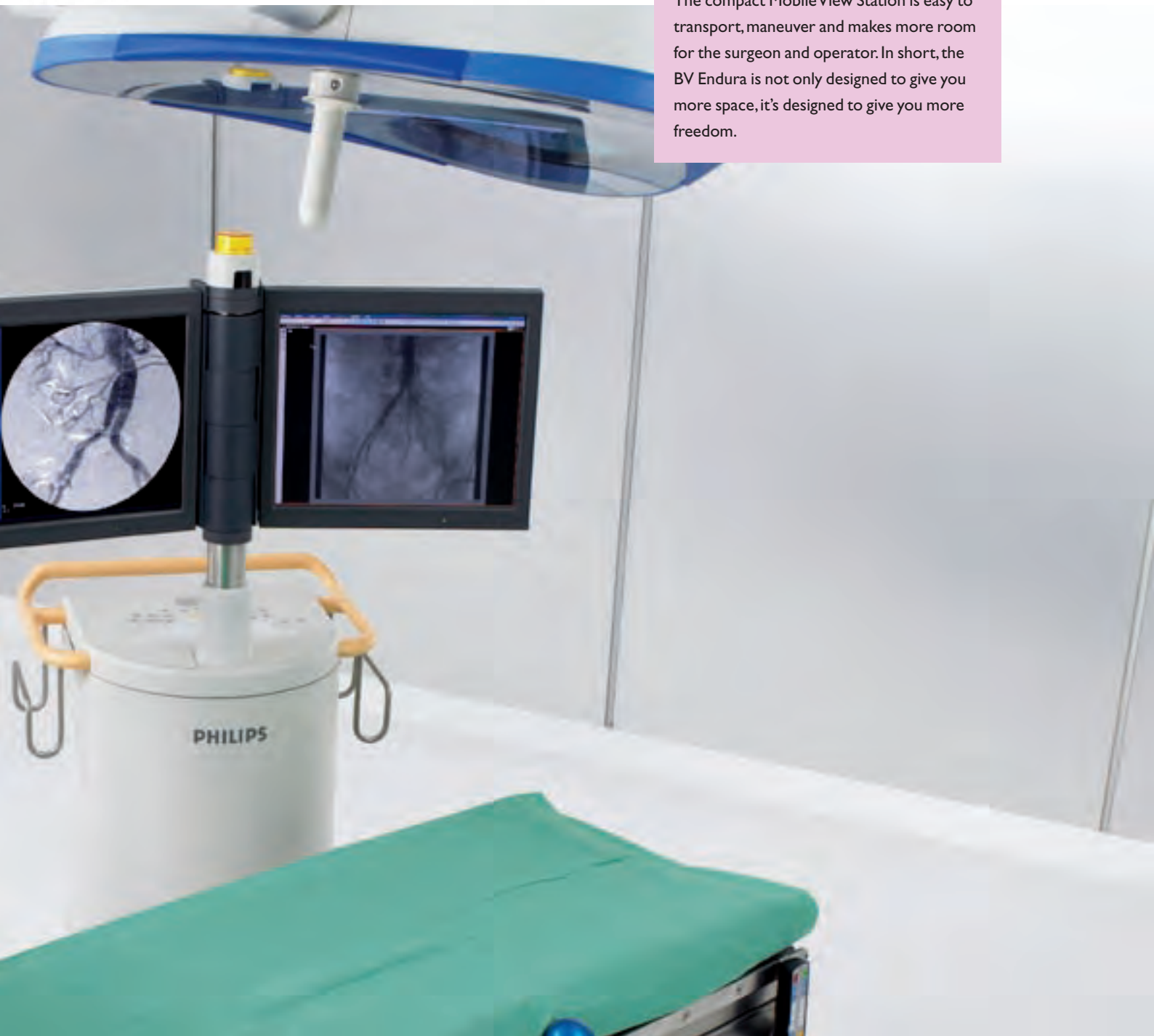


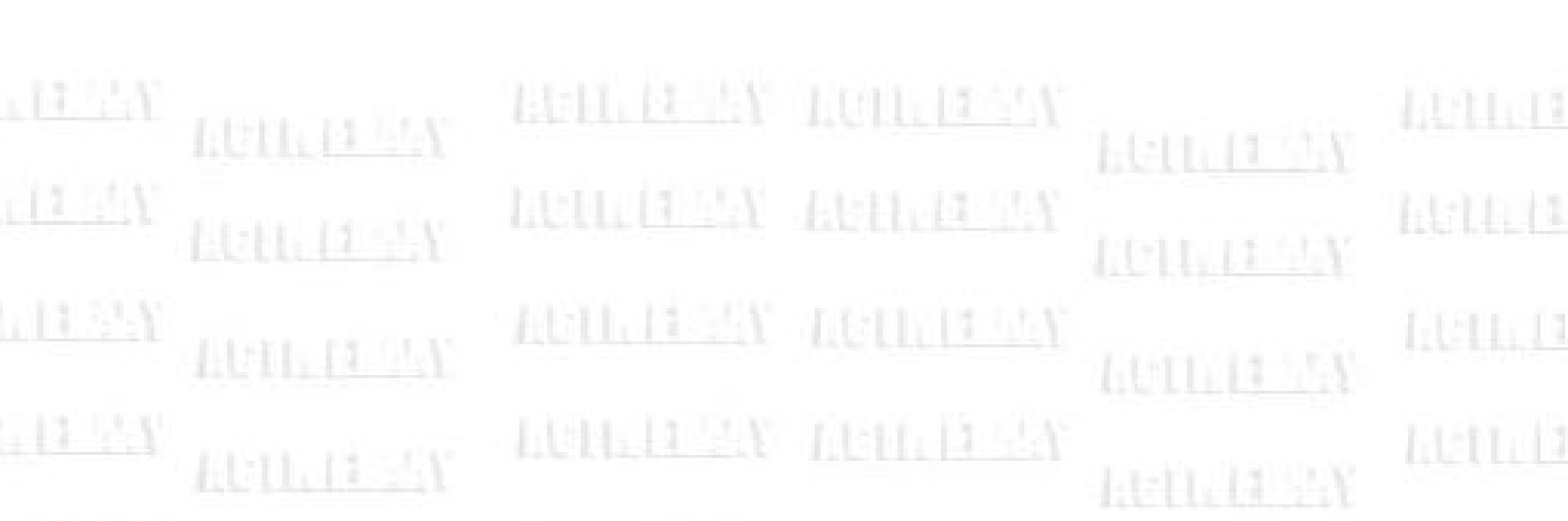
and adding space.



The BV Endura is designed to give you more space in the OR by taking up less of it.

The compact MobileView Station is easy to transport, maneuver and makes more room for the surgeon and operator. In short, the BV Endura is not only designed to give you more space, it's designed to give you more freedom.





# It's about optimizing workflow...



Increase your efficiency in many ways with the BV Endura. The BV Endura can be quickly moved into place, thanks to its ultra compact foot and C-arc handles. With the single user concept and Anatomically Programmed Fluoroscopy (APF) parameters, you can easily control every step of your procedures.



The BV Endura has a fully integrated DICOM connectivity solution (full RIS/HIS compatibility, export of examination onto the hospital network) and is equipped with a state-of-the-art ViewForum Surgical Workstation. With this workstation you can import multi-modality images directly into your workstation and view them instantly on the right hand monitor that acts as a digital interactive light-box.

An intuitive user-interface with buttons exactly where you need and expect them to be, makes working with the BV Endura easier and faster.

With a touch screen on the left monitor, patient administration and post-processing on acquired images is literally at your fingertips.

All extras like the paper/ transparency printer and Medical DVD recorder can of course be easily accommodated into your Mobile View Station.



## Feel safe with Philips

Philips has over 50 years of experience in developing and servicing mobile C-arm systems. This proven history and experience is our solid basis to continue providing you with unparalleled customer service for the new BV Endura.

When you invest in the BV Endura, you invest in the future. Philips' ongoing commitments to develop future-safe technology means that you can keep your BV Endura system up-to-date throughout its lifecycle, embracing emerging application demands, and keeping up with advances in networking and PACS.

Through service excellence, flexible solutions and effective relationships, Philips' CUSTOMerCARE service programs give you all the support you need to ensure your BV Endura system always operates at peak performance – today and in the future.

and efficiency.



**Philips Medical Systems is part  
of Royal Philips Electronics**

Interested?

Would you like to know more about our  
imaginative products? Please do not hesitate to  
contact us. We would be glad to hear from you.

On the web

[www.medical.philips.com](http://www.medical.philips.com)

Via email

[medical@philips.com](mailto:medical@philips.com)

By fax

+31 40 27 64 887

By postal service

Philips Medical Systems  
Global Information Center  
P.O. Box 1168  
5602 BD Eindhoven  
The Netherlands

BV Endura and CUSTOMerCARE are  
trademarks of Koninklijke Philips Electronics  
N.V. Certain features described in this  
brochure are optional or may not be available  
in some countries. Please contact your local  
Philips representative for further details.

Asia

Tel: +852 2821 5888

Europe, Middle East, Africa

Tel: +31 40 27 87246

Latin America

Tel: +55 954 628 1000

North America

Tel: +1-800-285-5585

©2005 Koninklijke Philips Electronics N.V.

All rights are reserved. Reproduction in whole or in part is  
prohibited without the prior written consent of the  
copyright holder.

Philips Medical Systems Nederland B.V. reserves the right  
to make changes in specifications and/or to discontinue any  
product at any time without notice or obligation and will  
not be liable for any consequences resulting from the use  
of this publication.

Printed in The Netherlands.

4522 962 08151/000 \* OCT 2005

